

# Spoof emails



A spoof email will appear as though it is sent from a genuine source such as someone you know or a well-known company.

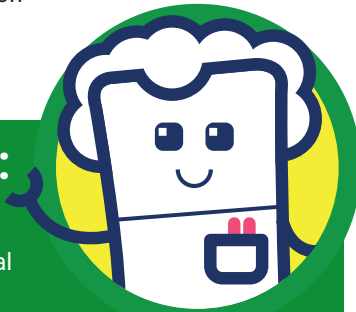
This is to trick people into clicking on fake websites or opening malicious attachments to steal personal information such as passwords and usernames.

## Spot the signs:

- Asking to respond with your financial or personal information
- A link to a website from the email
- An email from someone you don't recognise

## How to protect your business:

- Don't open attachments in any unexpected emails
- Never respond to an email which will request your personal or financial information
- Ensure your spam filter is up-to-date
- Block spoofing in your email server – most email servers have this option
- If you receive an email that asks you to login into your account, visit the website directly and do not click on the link – look for the https:// on the website
- Contact the sender to confirm they sent you the email



To report a concern contact: Action Fraud **0300 123 2040**

For more information visit our website:  
[www.kent.police.uk/safeonline](http://www.kent.police.uk/safeonline)



**Kent  
Police**



# Spoof emails



A spoof email will appear as though it is sent from a genuine source such as someone you know or a well-known company.

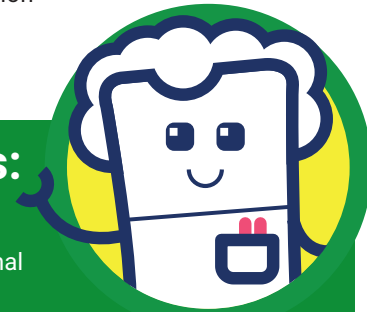
This is to trick people into clicking on fake websites or opening malicious attachments to steal personal information such as passwords and usernames.

## Spot the signs:

- Asking to respond with your financial or personal information
- A link to a website from the email
- An email from someone you don't recognise

## How to protect your business:

- Don't open attachments in any unexpected emails
- Never respond to an email which will request your personal or financial information
- Ensure your spam filter is up-to-date
- Block spoofing in your email server – most email servers have this option
- If you receive an email that asks you to login into your account, visit the website directly and do not click on the link – look for the https:// on the website
- Contact the sender to confirm they sent you the email



To report a concern contact: Action Fraud **0300 123 2040**

For more information visit our website:  
[www.kent.police.uk/safeonline](http://www.kent.police.uk/safeonline)



**Kent  
Police**

